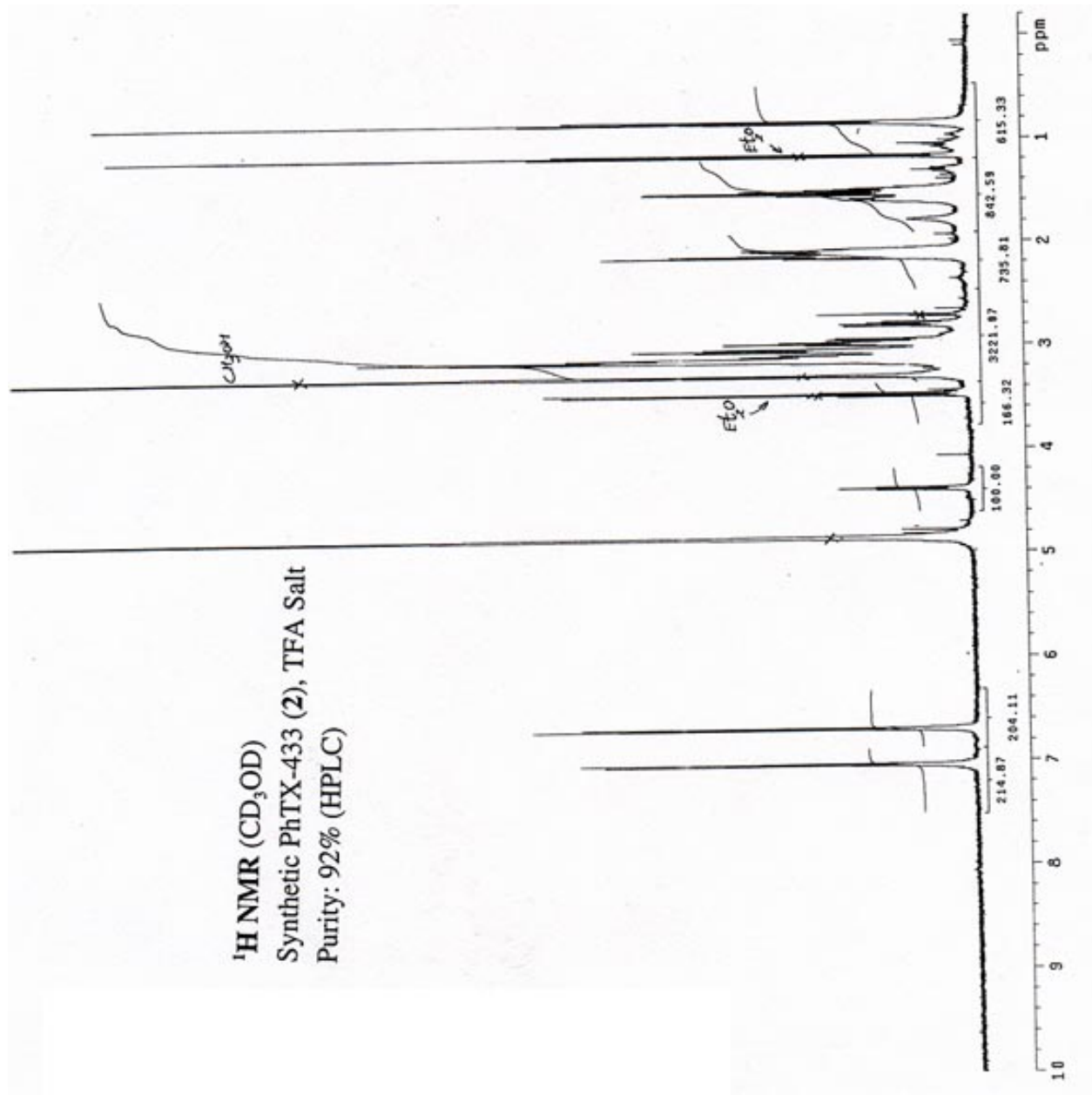


(6) ESMS, NMR and HPLC data for PhTX-433 (2), continued.



FAN MANG. 13C [1H] APT ON WFI-I-167-B IN CD300

176.094
174.182
162.936
157.312
131.855
129.078
116.230
27.236
26.988
26.740
26.492
26.244
26.000
25.752
25.504
25.256
25.008
24.760
24.512
24.264
24.016
23.768
23.520
23.272
23.024
22.776
22.528
22.280
22.032
21.784
21.536
21.288
21.040
20.792
20.544
20.296
20.048
19.800
19.552
19.304
19.056
18.808
18.560
18.312
18.064
17.816
17.568
17.320
17.072
16.824
16.576
16.328
16.080
15.832
15.584
15.336
15.088
14.840
14.592
14.344
14.096
13.848
13.600
13.352
13.104
12.856
12.608
12.360
12.112
11.864
11.616
11.368
11.120
10.872
10.624
10.376
10.128
9.880
9.632
9.384
9.136
8.888
8.640
8.392
8.144
7.896
7.648
7.400
7.152
6.904
6.656
6.408
6.160
5.912
5.664
5.416
5.168
4.920
4.672
4.424
4.176
3.928
3.680
3.432
3.184
2.936
2.688
2.440
2.192
1.944
1.696
1.448
1.200
0.952
0.704
0.456
0.208
0.000

¹³C NMR (CD₃OD)
Synthetic PhTX-433 (2), TFA Salt
Purity: ~90% (HPLC)

C₁₂, C

C₁₃, CH

